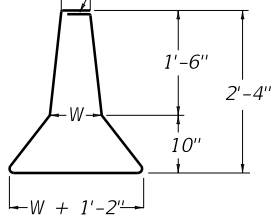
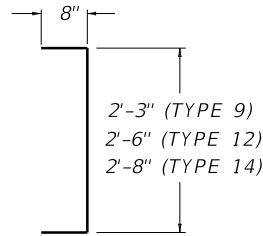


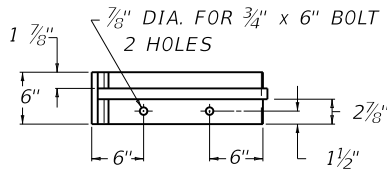
W MINUS 4"
LAP MAY BE AT TOP OR BOTTOM OR BOTH



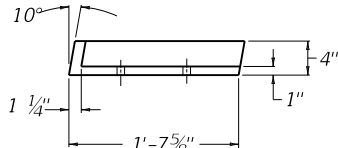
a BAR



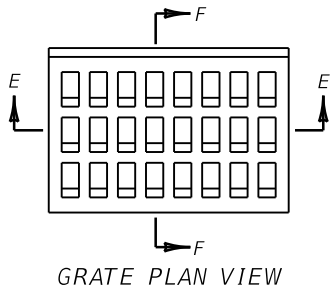
e BAR



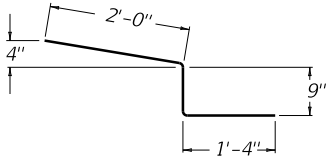
FRAME PLAN VIEW
(LEFT HALF)



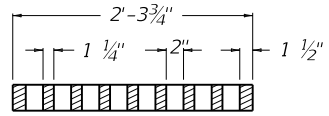
FRAME ELEVATION



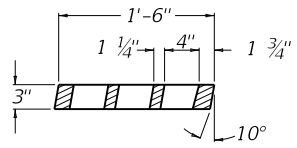
GRATE PLAN VIEW



m BAR



SECTION E-E



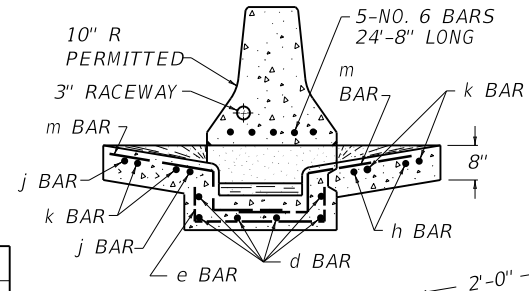
SECTION F-F

APPROX. QTYS. FOR 25' CONC. MEDIAN BARRIER

INLET	W	BAR a		BAR b		STEEL LBS. (8)	CONC. CU. YDS.
		QTY.	LENGTH	QTY.	LENGTH		
TYPE 9	9"	13	7'-4 1/4"	13	24'-8"	434	3.15
TYPE 12	12"	13	8'-1"	13	24'-8"	444	3.77
TYPE 14	14"	13	8'-7 1/2"	13	24'-8"	451	4.18

~ NOTES ~

- BID ITEM AND UNIT TO BID
CONC MED BARR BOX INLET TY ☆ ⊗ ⊕ △ EACH
- ☆ 9, 12, OR 14 DEPENDING ON "W" WIDTH
- ⊗ = "A" FOR SAG VERTICALS
"B" FOR STRAIGHT GRADE
- ⊕ = 1 FOR OPENING ON ONE SIDE OF BOX INLET
2 FOR OPENING ON BOTH SIDES OF BOX INLET
- △ (b) = BOTTOM PHASE (t) = TOP PHASE
NO (b) OR (t) SUFFIX INDICATES COMPLETE INLET.
- ALL STEEL REINFORCEMENT BARS SHALL BE NO. 5 BARS.
 - THE RATE OF INCREASE OF ADDITIONAL CLASS "A" CONCRETE PER FT. OF HEIGHT ABOVE THE MINIMUM 3'-10" SHALL BE 0.32 CU. YDS. FOR A TYPE 9 BOX INLET AND 0.35 CU. YDS. FOR A TYPE 12 AND 0.37 CU. YDS. FOR A TYPE 14 BOX INLET.
 - PLACE ALL STEEL REINFORCEMENT 2" MINIMUM FROM OUTSIDE FACE OF WALL, EXCEPT AS OTHERWISE SHOWN.
 - SEE CUR. STD. DWG. RDB-420 FOR STEEL REINFORCEMENT IN BOTTOM OF BOX WHEN H = 8'-0" TO 15'-0".
 - USE CHAMBER DIMENSIONS TO BEST FIT AND EQUALLY SPACE REINFORCEMENT STEEL.
 - A SYMMETRICAL WALL IS DETAILED, AN ASYMMETRICAL WALL MAY BE REQUIRED (SEE PLANS).
 - 2'-6" FOR MIN. HEIGHT OF 3'-10"
 - STEEL QUANTITIES ARE FOR CAST-IN-PLACE WALL.



SECTION C-C
(SLIP-FORM WALL)

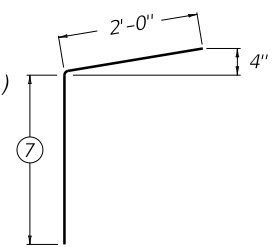
APPROX. QUANTITIES FOR INLET

TYPE	CLASS "A" CONC.	STEEL	
		CU. YDS.	LBS.
9A 1		3.76	155
9B 1		3.72	141
12A 1		3.96	158
12B 1		3.89	143
14A 1		4.09	159
14B 1		3.98	145

FOR APPROX. QUANTITIES FOR TYPE A2 OR B2 (ALL "W" WIDTHS) ADD 1.48 CU. YDS. CONCRETE AND 73 LBS. STEEL.

REINFORCEMENT BARS FOR BOX INLET

BAR	QTY.		LIN. FT.		QTY.		LIN. FT.	
	A1	A2	A1	A2	B1	B2	B1	B2
TYPE 9								
e	10		3'-6"		9		3'-6"	
TYPE 12								
e	10		3'-9"		9		3'-9"	
TYPE 14								
e	10		3'-11"		9		3'-11"	
ALL TYPES								
d	12		4'-3"		6		7'-5"	
f	8		1'-0"		8		1'-0"	
g	2	6	4'-6"		1	5	4'-6"	
h	0	2	0	9'-8"	0	2	0	9'-8"
j	4		3'-3"		2		7'-0"	
k	4	8	2'-0"		4	8	2'-0"	
m	6	12	4'-1"		6	12	4'-1"	



g BAR

USE WITH CUR. STD. DWGS.
RBM-001 RDB-230 RDB-420

KENTUCKY
DEPARTMENT OF HIGHWAYS
CONCRETE MEDIAN
BARRIER BOX INLET
(SLIP-FORM)

STANDARD DRAWING NO. RDB-231-11
SUBMITTED *[Signature]* DATE 12-01-15
APPROVED *[Signature]* DATE 12-01-15
STATE HIGHWAY ENGINEER